


2	DUVHA PS (MPUMALANGA OU) UNIT 2		A1	GCSS1074 REV14	1ZXX460010-DMC	W1761633	CED	CED
1	DUVHA PS (MPUMALANGA OU) UNIT 1		A1	GCSS1074 REV14	1ZXX460010-DMC	W1761632	CED	CED
NO.	ESKOM PROJECT NAME	ESKOM DWG. NO.	ESKOM DWG. REV.	ESKOM SPEC. REV.	ABB DWG. NO.	SERIAL NO.	HV	LV
PROJECT TABLE								

11	11	3.3	LINK BOARD	Dyn11
MVA	HV	MV	OLTC	PHASOR DIAG.
APPLICATION TABLE				

A3	PRV HAS BEEN MOVED TO FACE OUTSIDE OF TRANSFORMERS	S.MAZIBUKO	S.ROUX	E.HEIN	2018	25
A2	MAIN DRAIN VALVE AND FILTER VALVE MOVED ACROSS AND INSPECTION COVERS ADDED FOR THE LINK BOARD	S.MAZIBUKO	S.ROUX	E.HEIN	2018	25
A1	FIRST ISSUE FOR APPROVAL	S.MAZIBUKO	S.ROUX	E.HEIN	2018	22
REV	DESCRIPTION OF REVISION	DWN	CKD	APP	YEAR	WEEK

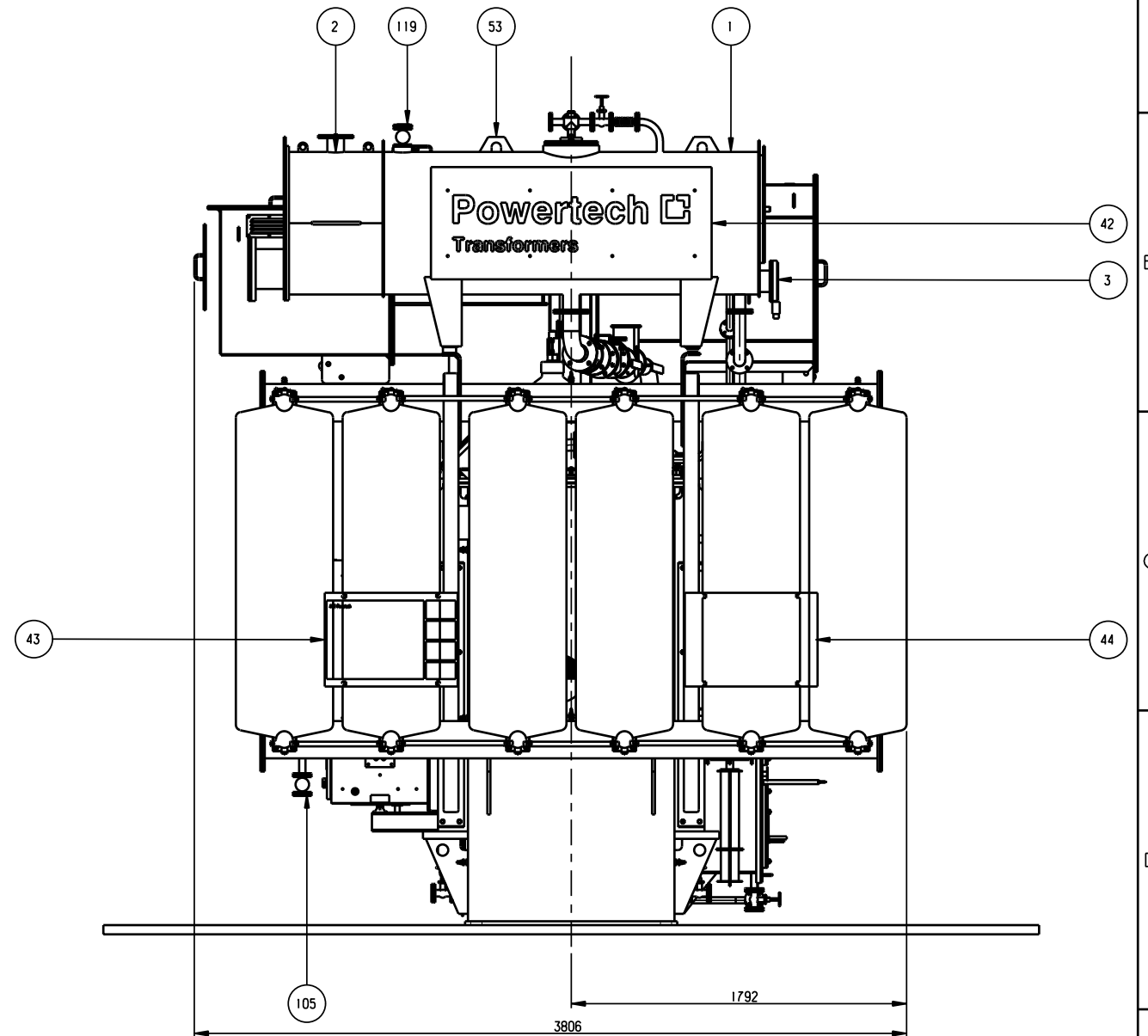
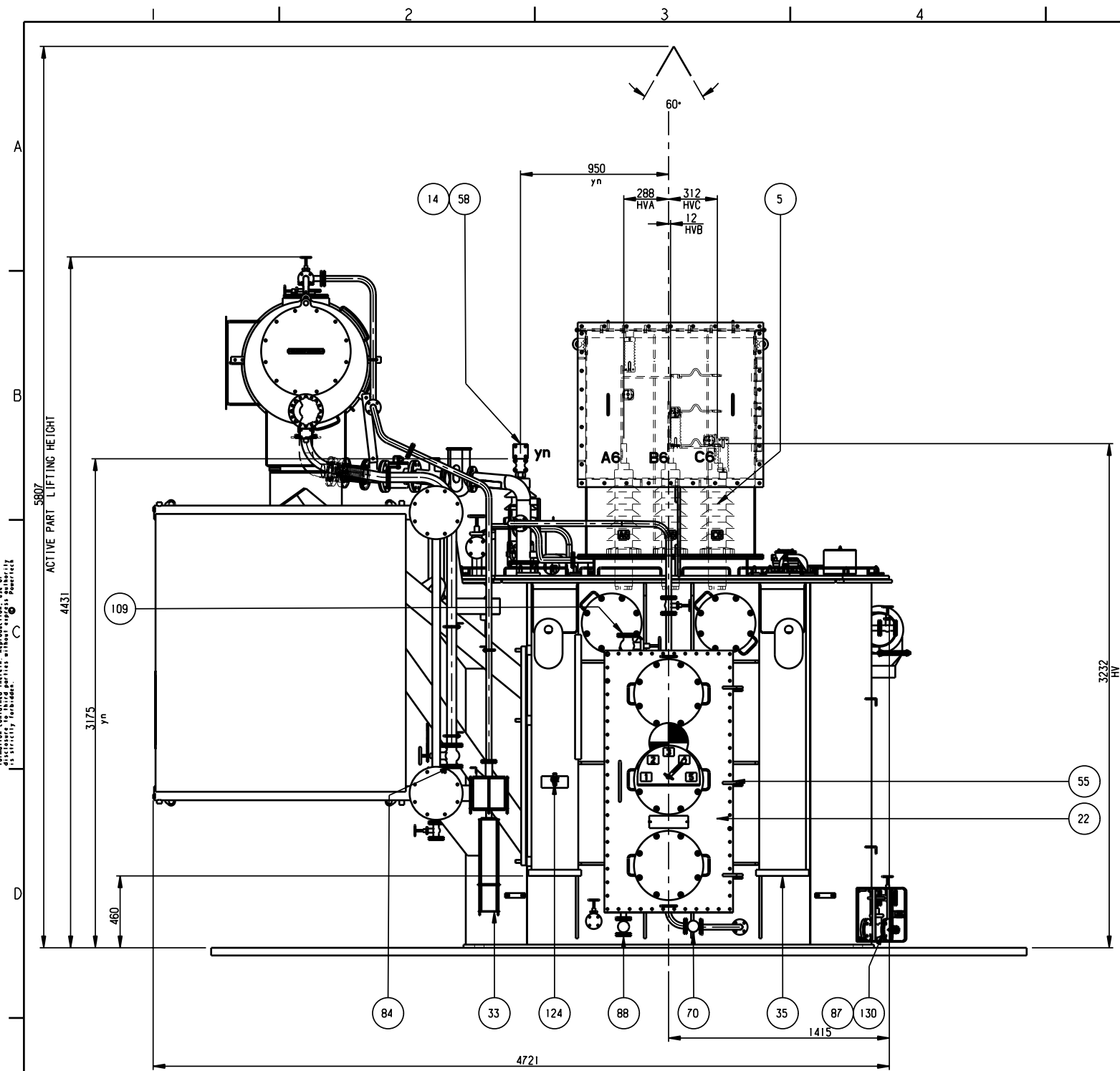
 Eskom	ESKOM REF: GGSS1074 REV14		DWG REV: A3
	ISSUE DATE: 22-2018	↓ ESKOM DWG NO ↓	SHEET:
	PREPARED BY: S.MAZIBUKO		
	CHECKED BY: S.ROUX	CAD REF:	CONT:
	APPROVED BY: E.HEIN	FILE NAME:	-


APP	TTM	E.HEIN		2018	22	TITLE: OUTLINE DRAWING	REV A3
CHKD	TTM	S.ROUX		2018	22		SH 1
PREP	TTM	S.MAZIBUKO		2018	22		CNT 5
FNCT	DEPT	NAME	SIGN	YEAR	WK		
POWERTECH TRANSFORMERS						1ZXX460010-DMG	

Do not alter any detail in this document and in the information contained herein, without the written approval of the Engineering Manager.

Production engineering review
S. ROUX

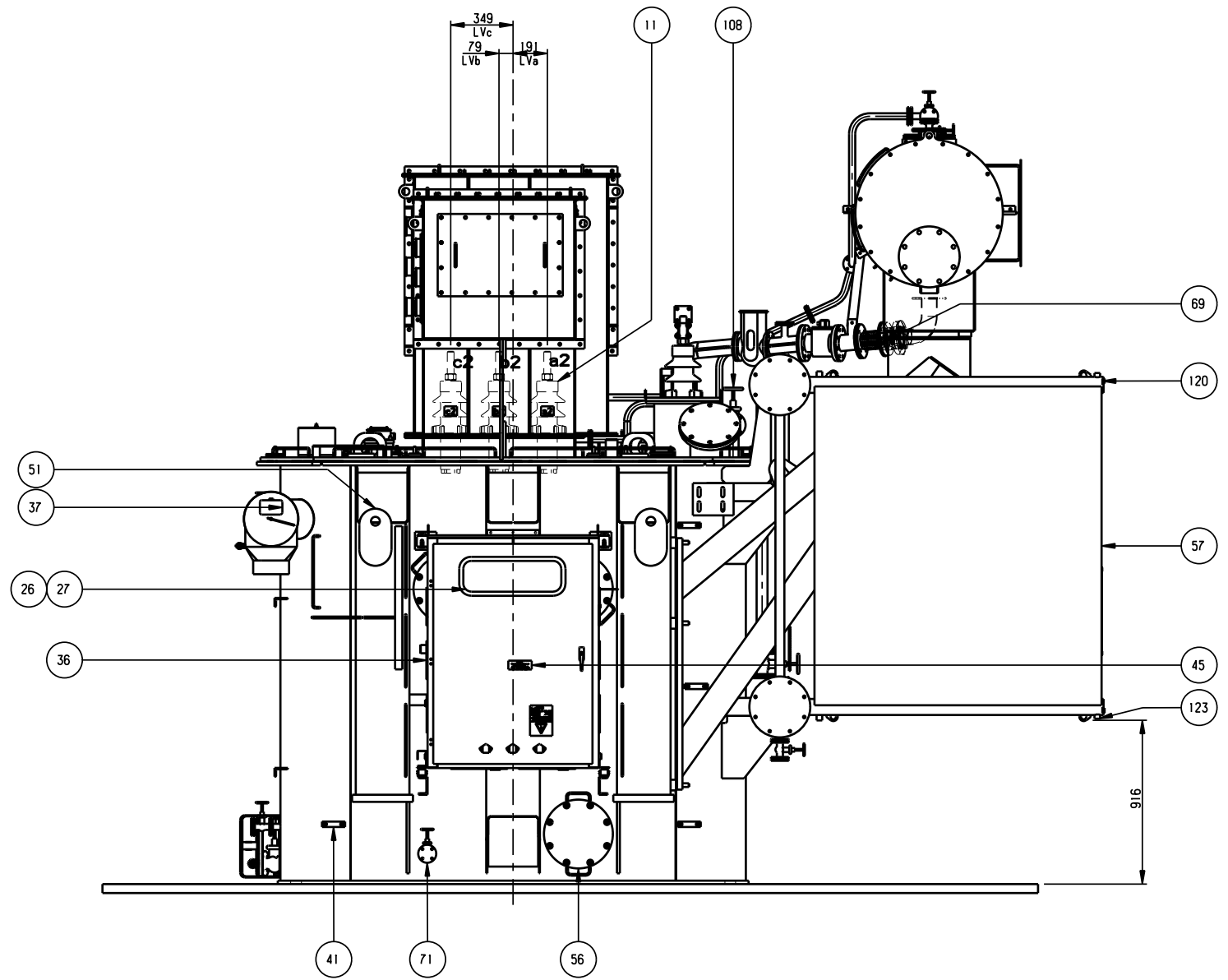
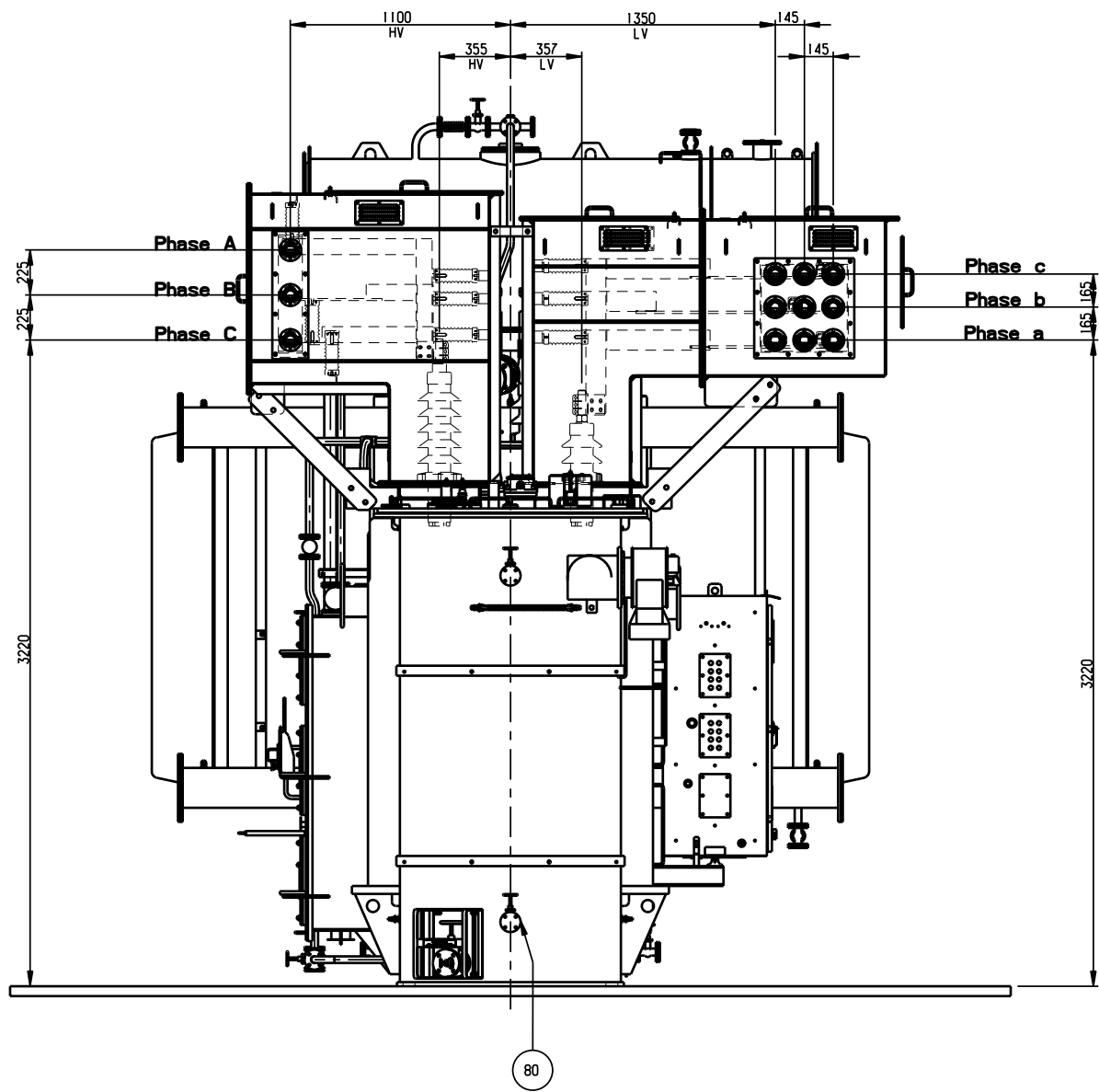
FORM T170 (A1)




	SEE PAGE 1							
A1	FIRST ISSUE FOR APPROVAL			S.MAZIBUKO	S.ROUX	E.HEIN	2018	22
REV	DESCRIPTION OF REVISION			DWN	CKD	APP	YEAR	WEEK
 Eskom				ESKOM REF: GGSSI074 REV14			DWG REV: A3	
				ISSUE DATE: 22-2018		↓ ESKOM DWG NO ↓		SHEET:
				PREPARED BY: S.MAZIBUKO				
				CHECKED BY: S.ROUX		CAD REF:		CONT:
				APPROVED BY: E.HEIN		FILE NAME:		-
APP	TTM	E.HEIN		2018	22	TITLE: OUTLINE DRAWING		REV A3
CHKD	TTM	S.ROUX		2018	22			SH 2
PREP	TTM	S.MAZIBUKO		2018	22			CNT 5
FNCT	DEPT	NAME	SIGN	YEAR	WK	↓ P1T DWG NO ↓		
Powertech Transformers						1ZXX460010-DMG		

© Eskom, all rights in this document and in the information contained herein, is reserved. No part of this document may be reproduced, stored in a retrieval system, or transmitted in any form or by any means, electronic, mechanical, photocopying, recording, or by any information storage and retrieval system, without prior written permission from Eskom.

Production engineering review
Design engineering review
S. ROUX

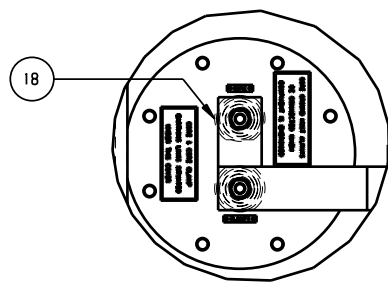
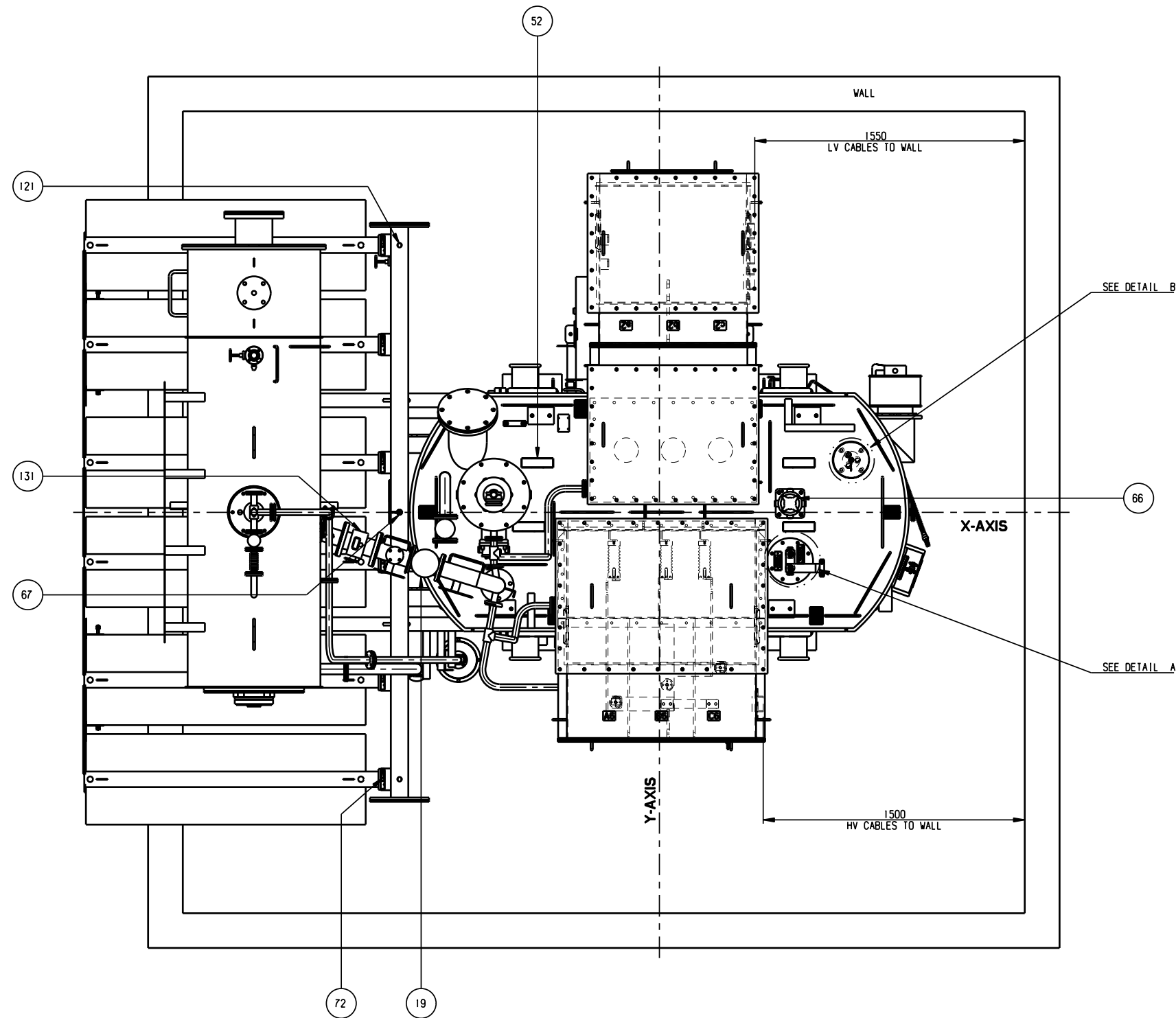


SEE PAGE 1											
A1	FIRST ISSUE FOR APPROVAL					S.MAZIBUKO	S.ROUX	E.HEIN	2018	22	
REV	DESCRIPTION OF REVISION					DWN	CKD	APP	YEAR	WEEK	
 Eskom						ESKOM REF: GGSSI074 REV14				DWC REV: A3	
						ISSUE DATE: 22-2018				↓ ESKOM DWG NO ↓	SHEET:
						PREPARED BY: S.MAZIBUKO				CAD REF:	CONT:
						CHECKED BY: S.ROUX				FILE NAME:	-
APPROVED BY: E.HEIN											
APP	TTM	E.HEIN		2018	22	TITLE:				REV	
CHKD	TTM	S.ROUX		2018	22	OUTLINE DRAWING				A3	
PREP	TTM	S.MAZIBUKO		2018	22	↓ PTT DWG NO ↓				SH	
FNCT	DEPT	NAME	SIGN	YEAR	WK	POWERTECH TRANSFORMERS				CNT	
						IZXX460010-DMG				5	

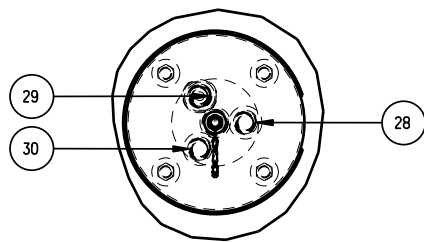
By reference to the cable in this document and in the information contained herein, the user is advised that the user is responsible for the correct interpretation and use of the information contained herein.

Production engineering review
Design engineering review
S. ROUX

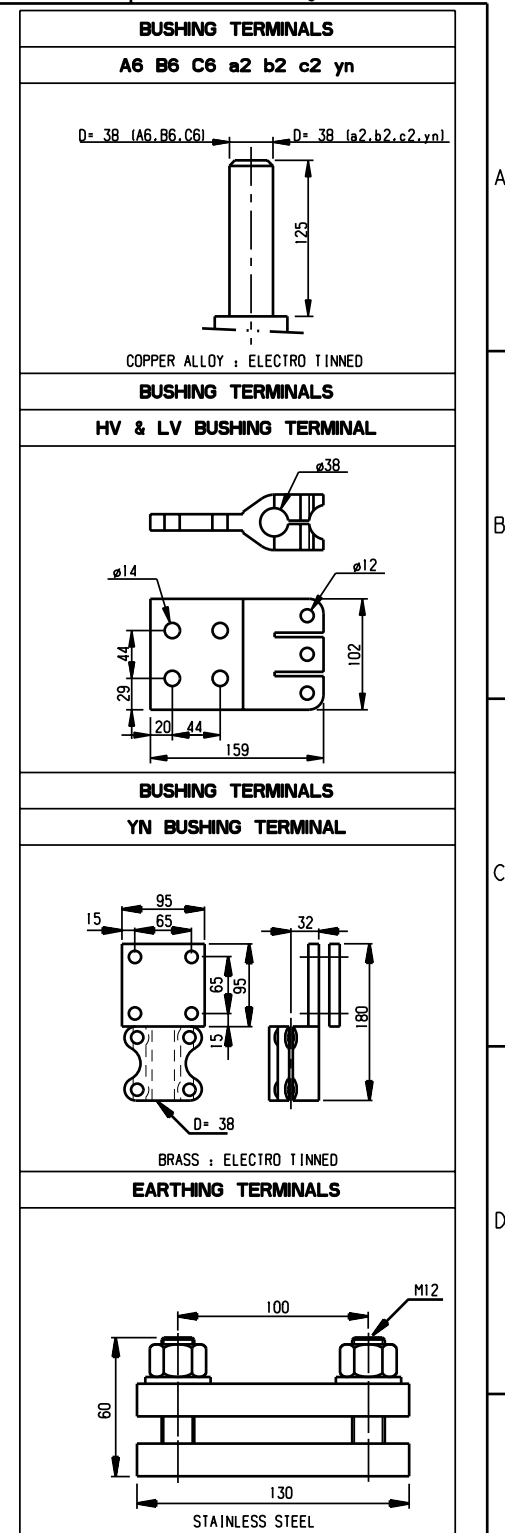
FORM T170 (A1)




DETAIL A
SCALE 0.240



DETAIL B
SCALE 0.240



	SEE PAGE 1							
A1	FIRST ISSUE FOR APPROVAL			S.MAZIBUKO	S.ROUX	E.HEIN	2018 22	
REV	DESCRIPTION OF REVISION			DWN	CKD	APP	YEAR WEEK	
<div> Eskom</div>				ESKOM REF: GGSS1074 REV14			DWG REV: A3	
				ISSUE DATE: 22-2018		↓ ESKOM DWG NO ↓		SHEET:
				PREPARED BY: S.MAZIBUKO				
				CHECKED BY: S.ROUX		CAD REF:		CONT:
				APPROVED BY: E.HEIN		FILE NAME:		-
APP	TTM	E.HEIN		2018	22	TITLE:		REV A3
CHKD	TTM	S.ROUX		2018	22	OUTLINE DRAWING		SH 4
PREP	TTM	S.MAZIBUKO		2018	22			CNT 5
FNCT	DEPT	NAME	SIGN	YEAR	WK	↓ PTT DWG NO ↓		
POWERTECH TRANSFORMERS						12XX460010-DMG		

Be aware all parts in this document are in the 1st
Revision unless stated here. Subsequent revisions will be
indicated by a circled 'R' followed by the revision number.
No further changes will be made without the approval of the
design engineer.

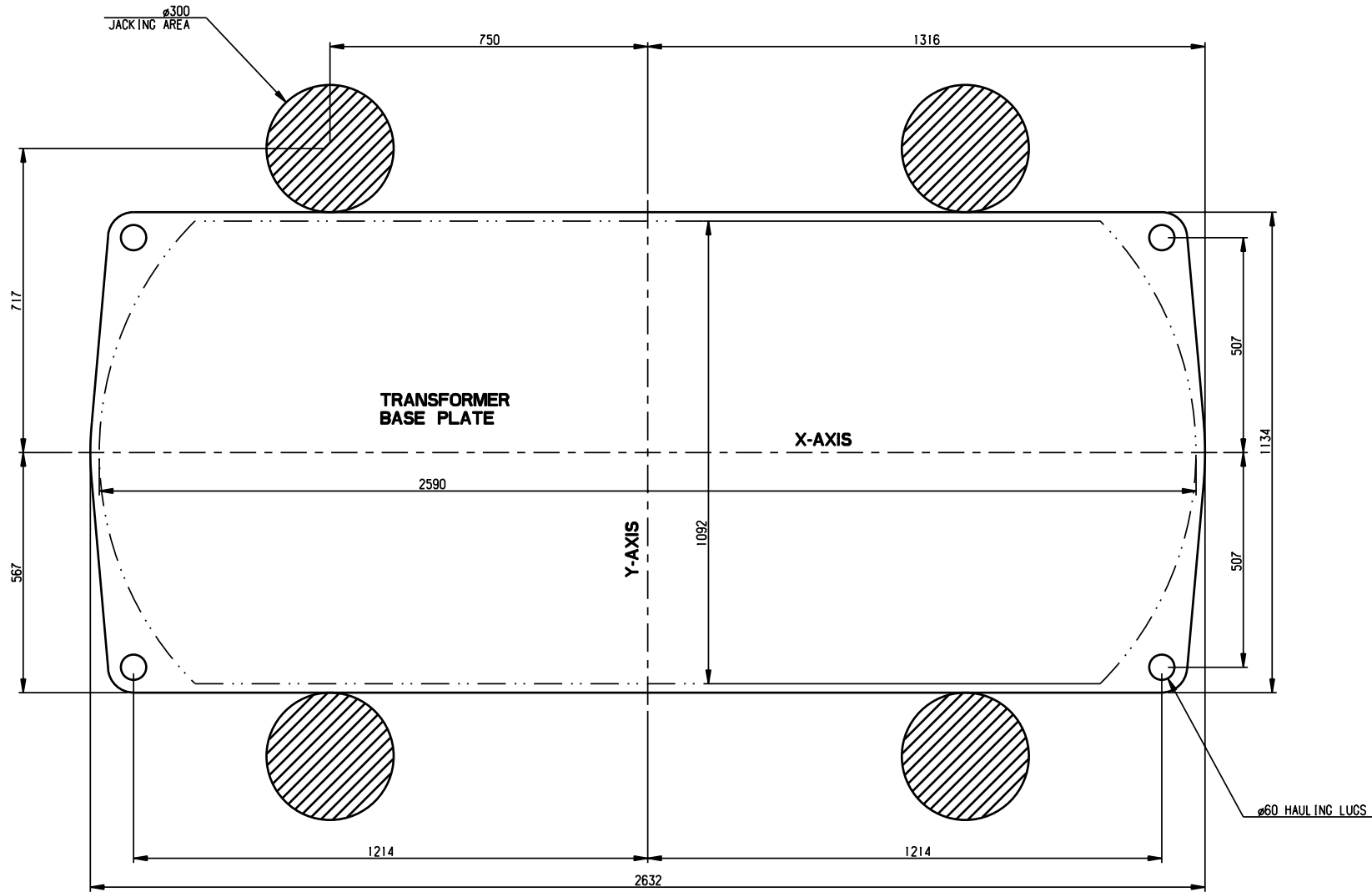
Production engineering review
S. ROUX


Production engineering review
S. ROUX

FORM T170 (A1)

131	SUDDEN FLOW OIL VALVE (SERGI)	80 NOM
130	SAMPLE VALVE - MAIN TANK	1/4" BSP
124	TRANSFORMER ROUTINE SAMPLING POINT	1/4" BSP
123	DRAIN PLUG - RADIATOR	M6
121	AIR RELEASE PLUG - HEADER PIPE	M6
120	AIR RELEASE PLUG - RADIATOR	M6
119	AIR RELEASE VALVE - MAIN CONSERVATOR	25 NOM
109	FILTER VALVE - LINK BOARD	50 NOM
108	FILTER VALVE - MAIN TANK	50 NOM
105	DRAIN VALVE - HEADER PIPE	25 NOM
88	DRAIN VALVE - LINK BOARD	25 NOM
87	DRAIN / FILTER VALVE - MAIN TANK	50 NOM
84	DRAIN / FILTER VALVE - MAIN CONSERVATOR	50 NOM
80	ISOLATING VALVE - DRY-KEEP TOP & BOTTOM	25 NOM
72	ISOLATING VALVE - RADIATOR (TOP & BOTTOM)	
71	ISOLATING VALVE - SERGI	25 NOM
70	ISOLATING VALVE - LINK BOARD TOP & BOTTOM	25 NOM
69	ISOLATING VALVE - MAIN CONSERVATOR	80 NOM
67	THERMOMETER POCKET FOR CHECKING TOP AND BOTTOM HEADER PIPE	
66	CURRENT TRANSFORMER TERMINAL BOX	
58	LV NEUTRAL BUSHING TERMINAL	
57	DETACHABLE RADIATORS WITH DRAIN AND AIR RELEASE PLUGS	
56	INSPECTION COVERS	
55	LINK BOARD COVER	
53	LIFTING LUG FOR LIFTING CONSERVATOR ONLY	
52	LIFTING LUG FOR LIFTING COVER ONLY	
51	LIFTING BEAM FOR LIFTING COMPLETE TRANSFORMER	
45	OIL INFORMATION PLATE	
44	VALVE LOCATION PLATE	
43	RATING AND DIAGRAM PLATE	
42	PIT NAME PLATE	
41	EARTHING TERMINALS	
37	MAIN TANK PRESSURE RELIEF DEVICE	
36	MARSHALLING KIOSK	
35	JACKING PAD	
33	MAIN CONSERVATOR DE - HYDRATING BREATHER	
30	POCKET FOR CHECKING THERMOMETER	
29	POCKET FOR OIL THERMOMETER	
28	POCKET FOR WINDING THERMOMETER	
27	THERMOMETER FOR OIL TEMPERATURE	(400 PT100 12m MESSKO
26	THERMOMETER FOR WINDING TEMPERATURE	(400 PT100 12m MESSKO
22	LINK BOARD	
19	GAS OPERATED RELAY	
18	CORE EARTHING BUSHING	
14	LV NEUTRAL BUSHING	CED 12/2500
11	LV BUSHING	CED 12/2500
5	HV BUSHING	CED 36/2500
3	OIL LEVEL INDICATOR MAIN CONSERVATOR	
2	SERGI EXPANSION TANK	
1	MAIN CONSERVATOR WITH REMOVABLE END	
ITEM	DESCRIPTION	

MASS TABLE	kg	Litre
CORE AND WINDINGS	10 315	
TANK , COVER , FITTINGS	10 773	
TRANSFORMER COMPLETE WITHOUT OIL	21 088	
TOTAL OIL QUANTITY	5 706	6 376
TRANSFORMER COMPLETE WITH OIL	26 794	
TRANSPORT MASS WITHOUT OIL	16 436	
TRANSPORT MASS WITH OIL	20 117	



SEE PAGE 1												
AI	FIRST ISSUE FOR APPROVAL					S.MAZIBUKO	S.ROUX	E.HEIN	2018	22		
REV	DESCRIPTION OF REVISION					DWN	CKD	APP	YEAR	WEEK		
 Eskom						ESKOM REF: GGSS1074 REV14					DWG REV: A3	
						ISSUE DATE: 22-2018					↓ ESKOM DWG NO ↓	SHEET:
						PREPARED BY: S.MAZIBUKO						
						CHECKED BY: S.ROUX					CAD REF:	CONT:
APPROVED BY: E.HEIN					FILE NAME:					-		
APP	TTM	E.HEIN					2018	22	TITLE:		REV A3	
CHKD	TTM	S.ROUX					2018	22	OUTLINE DRAWING		SH	
PREP	TTM	S.MAZIBUKO					2018	22	↓ PIT DWG NO ↓		CNT 5	
FNCT	DEPT	NAME				SIGN	YEAR	WK	↓ PIT DWG NO ↓		CNT 5	
Powertech Transformers									12XX460010-DMG			